

STRUCTURAL ENGINEER:  
STANLEY GLEIT LLC  
37 Stonevick Place  
Monroe Township, New Jersey 08831  
(609) 409-2939, Fax: (609) 409-2659  
E-Mail: sgleit27@comcast.net

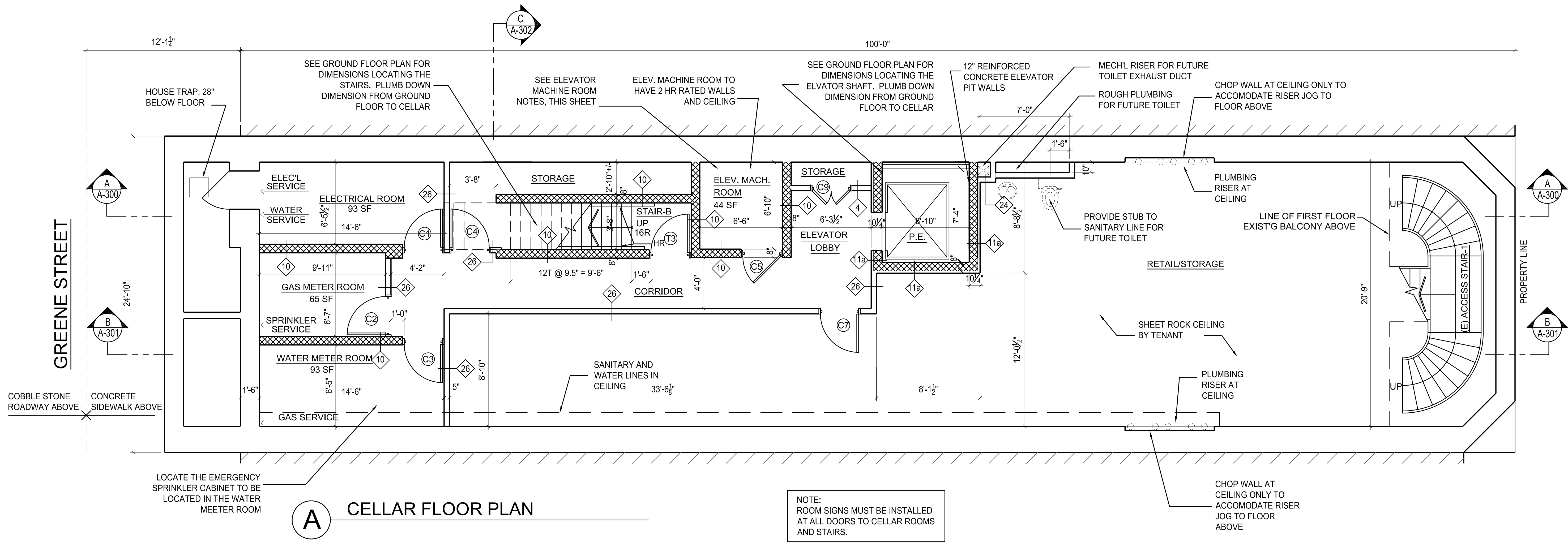
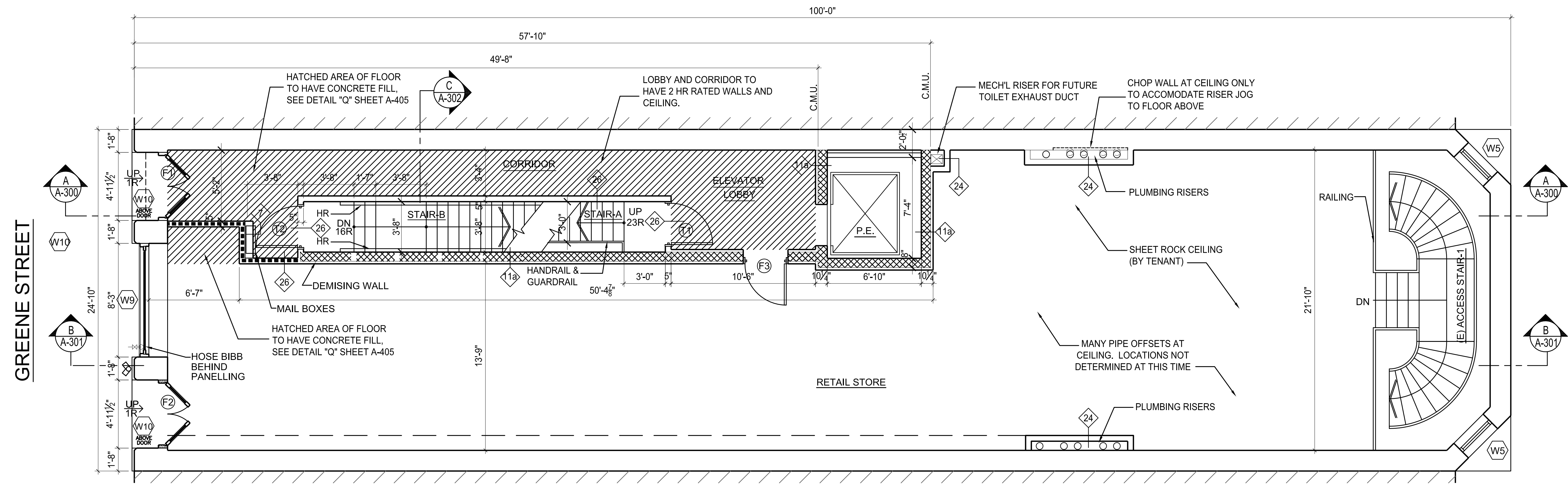
M.E.P. ENGINEER:  
P1 MECHANICAL  
150 West 28th Street, Suite 1901  
New York, New York 10011  
(212) 229-1775, Fax: (212) 229-1828  
E-Mail: p1mechanical@aol.com

INTERIOR DESIGNER:  
ALVEARY ARCHITECTURE  
303 West 28th St  
New York, New York 10011  
(212) 255-3572  
E-Mail: eric@alveary.net

70 GREENE STREET  
NEW YORK, NY

PROJECT  
70 GREENE STREET  
New York, New York

REV.	DATE
	2008-12-22
	2008-12-03
	2008-11-14
	2008-10-24
DESIGN DEV.	2008-10-15
DESIGN DEV.	2008-10-09
DESIGN DEV.	2008-10-02
DESIGN DEV.	2008-09-19
DESIGN DEV.	2008-09-18
DESIGN DEV.	2008-09-12
ISSUE DATE	2008-08-07
SCALE	1/4"=1'-0"
DWG. TITLE	CELLAR AND GROUND FLOOR PLANS
JOB NO.	DWG. NO.
0805	0805



- ELEVATOR MACHINE ROOM NOTES:
1. THE ENTRY DOOR MUST BE SELF CLOSING WITH A KEY LOCK AND HAVE A 2 HR RATING.
  2. THE ROOM MUST CONTAIN A CURRENTLY CHARGED WALL HUNG FIRE EXTINGUISHER.
  3. FURNISH AND INSTALL COMBINATION LIGHT SWITCH AND RECEPTACLE.
  4. ALL DOORS MUST WORK SEAM-LESSLY AND OPEN EXACTLY AT FINISHED FLOORS.
  5. SIGN ON ELEVATOR ROOM DOOR "ELECTRICAL MOTOR ROOM DOOR."
  6. FIREMEN RECALL MUST BE WORKING PROPERLY.

